



Specifications

Operating temperature	0 to +50 °C
Operating Voltage	24 VDC
Housing Cover	Green
PCB	Double sided Glass Epoxy
Connection	Common -Ve
Fuse	Glass Fuse – 5 X 20 mm

Connection Details

Type of Connection	Screw Connection
Contact	Phoenix / Vital / Wago
Terminal Option	PCB Terminal Block
Wire Cross – Section	2.5 Sq. mm
Fuse Holder	Vertical Mounting
No of Fuses	4,8,16, and 32
Protection	Diode with Reverse polarity

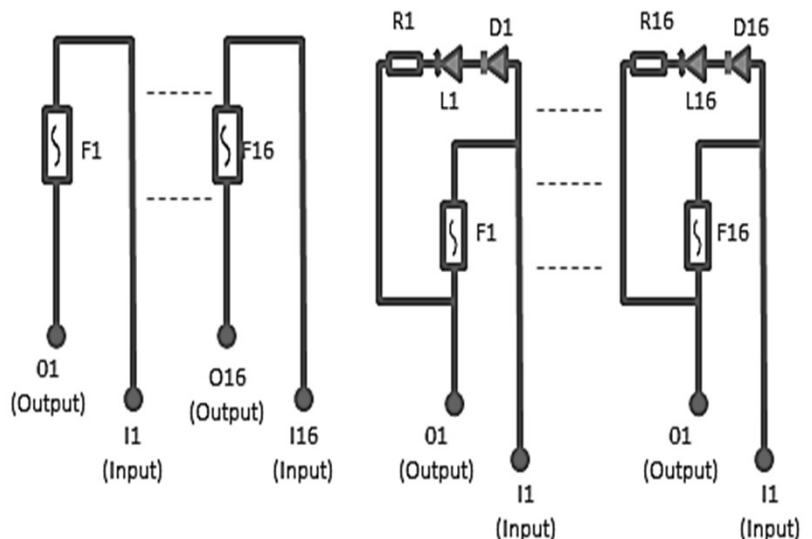
Ordering Code

Ordering Code	No of Fuses	Dimensions(LxWXH) in mm
SMC - FU - 04	4 Fuses	42 X 126 X 7 0
SMC - FU - 08	8 Fuses	79 X 126 X 7 0
SMC - FU - 16	16 Fuses	150 X 126 X 70
SMC - FU - 32	32 Fuses	300 X 126 X 70

Features

- Simple to operate module with easy to replace diodes
- Vertical Fuse Holders
- LED Indication ai input & Fuse fail indication
- Heat resistant & shock proof & Din rail mountable
- Ideal for temperature fluctuating situations
- Stringently checked on various criterion of performance
- Auto - Man version in Power Distribution Mode
- Longer functional life

Connection diagram



Fuse Modules with Single Fuse per Channel

Fuse Fail Indication Module with Single Fuse Per channel